

[Braindump2go 70-646 VCE Free Download (251-260)]

MICROSOFT NEWS: 70-646 Exam Questions has been Updated Today! Get Latest 70-646 VCE and 70-646 PDF Instantly!

Welcome to Download the Newest Braindump2go 70-646 VCE&70-646 PDF Dumps:

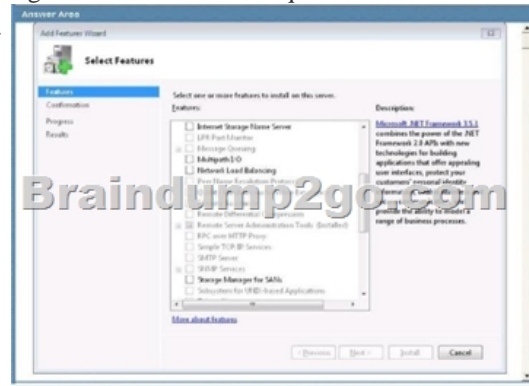
<http://www.braindump2go.com/70-646.html> (283 Q&As) 70-646 Exam Questions are updated recently by Microsoft Official! Braindump2go has already got all the latest 70-646 Exam Questions and provides latest 70-646 Dumps for free download Now!70-646 PDF and 70-646 VCE are available for download now! You can get the latest updated 70-646 Practice Tests and 70-646 Practice Exams! Pass 70-646 Certification Exam Now! Exam Code: 70-646Exam Name Windows Server 2008, Server AdministratorCertification Provider: MicrosoftCorresponding Certifications: MCSA, MCSA: Windows Server 2008, MCSE, MCSE: Private Cloud Windows Server 200870-646 Dumps,70-646 Study Guide,70-646 Exam Questions,70-646 eBook,70-646 eBook PDF,70-646 Dumps PDF,70-646 Dumps Latest,70-646 Book,70-646 Braindumps,70-646 Braindump PDF,70-646 Braindump Free,70-646 Practice Test,70-646 Practice Questions,70-646 PDF eBook,70-646 PDF,70-646 VCE

Pro: Windows Server 2008,

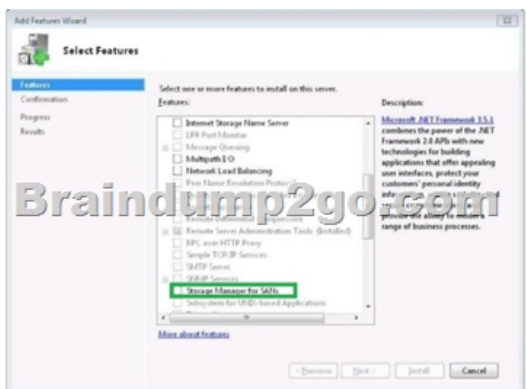


Product Description
Exam Number/Code: 70-646
"Pro: Windows Server 2008, Server Administrator" Certification. With this exam, you will be able to take the exam. With this exam, you will be able to take the exam. With this exam, you will be able to take the exam.
Questions and Answers : 283 Q&As
Updated: Dec 17, 2015
~~\$120.00~~ **\$99.99**
[PDF DEMO](#)
[CHECK OUT](#)
Free Demo Download
Braindump2go offers you the latest exam questions and answers before you purchase.
 Printable PDF

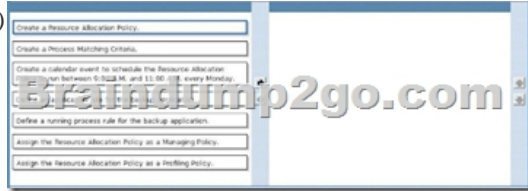
QUESTION 251A company has servers that run Windows Server 2008 R2 and a storage area network (SAN) that supports the virtual Disk Service (VDS). You are designing a storage solution for the servers. The storage solution must meet the following requirements:- Allow the creation of Fibre Channel (FC) and Internet SCSI (iSCSI) logical unit numbers (LUNs),- Allow the management of FC and iSCSI LUNs. You need to ensure that the storage solution meets the requirements. Which feature should you install? To answer, select the appropriate feature in the answer area.



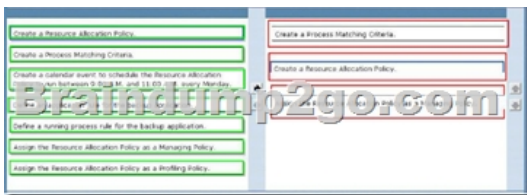
Answer:



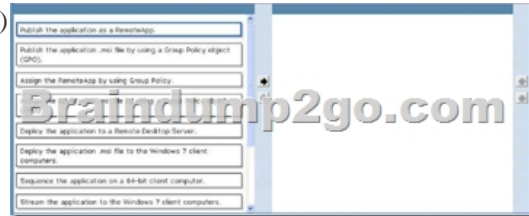
QUESTION 252A company currently has a Remote Desktop Services (RDS) farm consisting of three Remote Desktop Session Hosts (RD Session Hosts) and one Remote Desktop Session Broker (RD Session Broker). The RD Session Hosts are configured to use Windows Network Load Balancing. The RDS servers run slowly every Monday morning between 9:00 A.M. and 11:00 A.M. You establish that your third-party backup solution is running on the RDS servers at these times and is causing the poor performance. Company policy mandates that the backup must occur at this time. You have the following requirements:- Implement Windows System Resource Manager (WSRM) on each of the RDS servers to minimize the system resources utilized by the backup application.- Ensure that WSRM runs only when required. You need to configure WSRM. Which actions should you perform in sequence? To answer, move the appropriate actions from the list of actions to the answer area and arrange them in the correct order. (Use only actions that apply.)



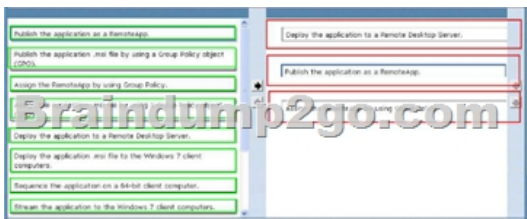
Answer:



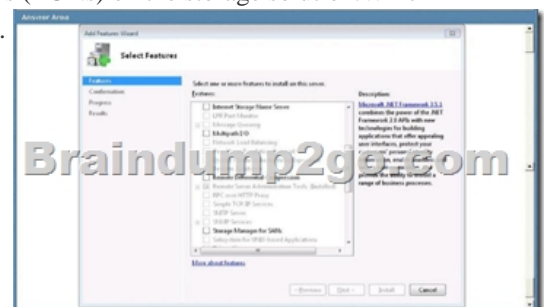
QUESTION 253A company has servers that run Windows Server 2008 R2 and client computers that run 32-bit Windows 7 Enterprise. The environment includes Microsoft Application Visualization (App-V). You plan to deploy a 64-bit only application. You need to ensure that users can run the application. The application must be automatically available on the client computers. Which actions should you perform in sequence? To answer, move the appropriate actions from the list of actions to the answer area and arrange them in the correct order. (Use only actions that apply.)



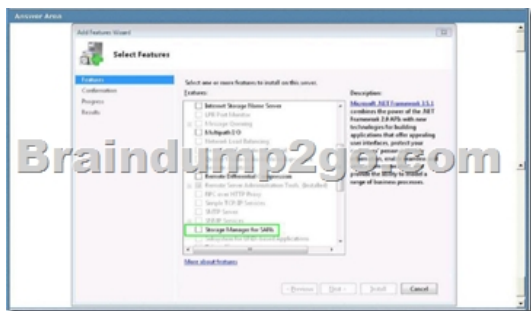
Answer:



QUESTION 254A company has servers that run Windows Server 2008 R2. You are designing a storage solution for the servers. The storage solution includes Fibre Channel (FC) and Internet SCSI (iSCSI) disk drive subsystems, and supports the Virtual Disk Service (VDS). You need to ensure that you can create and manage logical unit numbers (LUNs) on the storage solution. Which feature should you install? To answer, select the appropriate feature in the answer area.



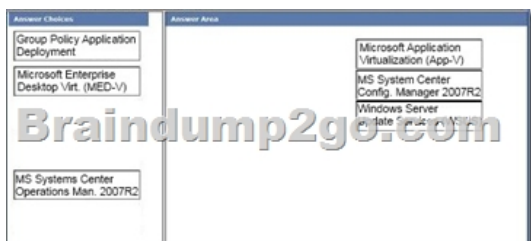
Answer:



QUESTION 255A company has client computers that run Windows 7. Each client computer is deployed with Microsoft Office 2010 pre-installed. The company is adding three line-of-business applications that require access to Office functionality. None of the line-of-business applications can co-exist with the others on the same computer. You are designing a solution that must meet the following requirements:- Allow the use of all the line-of-business applications on each client computer.- Maintain a central inventory of applications.- Centralize the process of deploying, streaming, updating and reporting on all applications. You need to recommend a solution that meets the requirements. Which technologies should you recommend to achieve the indicated goals? To answer, drag the appropriate technology or technologies to the correct location or locations in the answer area.



Answer:



QUESTION 256 Your network consists of a single Active Directory domain. All domain controllers run Windows Server 2008. All client computers run Windows Vista. You need to ensure that administrators are allowed to install USB drives on their computers. You must prevent non-administrative users from installing USB drives on their computers. What should you do? A. Implement Windows BitLocker Drive Encryption (BitLocker). B. Implement the Universal Description, Discovery, and Integration (UDDI) Services server role. C. Use a Group Policy object (GPO) to configure device installation restrictions. D. Use Windows Server Resource Manager (WSRM) to configure a per user resource access policy. Answer: C

QUESTION 257 Your network consists of a single Active Directory forest. The forest contains three domains named contoso.com, region1.contoso.com, and region2.contoso.com. The functional level of the three domains is Windows Server 2008. In contoso.com, employees from the helpdesk team are members of the Account Operators group. The helpdesk employees are responsible for modifying the properties of user objects in contoso.com. Employees frequently join and leave the helpdesk team. You need to implement a solution for managing user accounts that meets the following requirements:- Enables the helpdesk employees to manage the user objects in all domains - Minimizes the administrative effort required to manage the frequent changes to the helpdesk staff What should you do? A. Assign Full Control permissions to the Account Operators group in contoso.com for user accounts in all three domains. B. Add the helpdesk user accounts to the Account Operators group in region1.contoso.com and to the Account Operators group in region2.contoso.com. C. Create a new global group in contoso.com named Helpdesk-group. Add the helpdesk user accounts to Helpdesk-group. Add Helpdesk-group to the Account Operators group that is in all three domains. D. Create a new global group in contoso.com named Helpdesk-group. Add the helpdesk user accounts to Helpdesk-group. Add Helpdesk-group to the Accounts Operators group that is on every member server in all three domains. Answer: C

QUESTION 258 Your network consists of a single Active Directory domain. You need to ensure that support technicians can create Group Policy objects (GPOs) in the domain. You

must give the support technicians a GPO that contains the preconfigured settings that will be used to create new GPOs. What should you do? A. Assign permissions on the Sysvol folder. Create a new Starter GPO. B. Add the support technicians to the Group Policy Creator Owners group. Create a new Starter GPO. C. Add the support technicians to the Account Operators group. Delegate control on the Users container. Create an ADML file. D. Add the support technicians to the Account Operators group. Delegate control on the Domain Controllers organizational unit (OU). Create an ADMX file. Answer: B

QUESTION 259 Your company has a main office and a branch office. All domain administrators are located in the main office. Two support technicians are located in the branch office. You plan to deploy a new Windows Server 2008 server in the branch office. You need to plan for the management of the new Windows Server 2008 server. Your plan must meet the following requirements:- Allow the support technicians to install server roles - Allow the support technicians to stop and start services - Minimize the security privileges granted to the support technicians What should you include in your plan? A. Add the support technicians to the Domain Admins group. B. Assign the support technicians to the Administrators group on the new Windows Server 2008 server. C. Configure the restricted enrollment agent on the new Windows Server 2008 server. Create a permissions list for the support technicians. D. Place the new Windows Server 2008 server in a new organizational unit (OU). Assign the support technicians permission to modify objects in the new OU. Answer: B

QUESTION 260 Your network consists of a single Active Directory domain. The domain contains an organizational unit (OU) named Employees that contains all user accounts. The domain contains a global group named HR Admins. You need to plan for the delegation of administrative authority to meet the following requirements:- Allow HR Admins to create user accounts in the Employees OU. - Allow HR Admins to change the address attributes, the telephone number attributes, and the location attributes for existing user accounts.- Prevent HR Admins from resetting the passwords for existing user accounts. What should you include in your plan? A. Move the HR Admins group to the Domain Controllers OU. B. Add the HR Admins group to the Account Operators group. C. Run the Delegation of Control Wizard on the Employees OU. D. Create an OU named HR. Move the HR Admins group into the HR OU. Run the Delegation of Control Wizard on the HR OU. Answer: C

Braindump2go New Released 70-646 Dumps PDF are Now For Free Download, 283 Latest Questions, Download It Right Now and Pass Your Exam 100%:

Pro: Windows



The advertisement features a red and white book icon with a PDF symbol and the text 'PDF VCE' and 'Windows 2008'. Below the icon, the text reads: 'Questions and Answers Q&As', 'Updated: Dec 17, 2015', '\$120.00 \$99.99', 'PDF DEMO', and 'CHECK OUT'.

FREE DOWNLOAD: NEW UPDATED 70-646 PDF Dumps & 70-646 VCE Dumps from Braindump2go:
<http://www.braindump2go.com/70-646.html> (283 Q&As)]