

## Braindump2go Free 70-336 VCE Files Free Download (41-50)

**MICROSOFT NEWS: 70-336 Exam Questions has been Updated Today! Get Latest 70-336 VCE and 70-336 PDF Instantly!**

**Welcome to Download the Newest Braindump2go 70-336 VCE&70-336 PDF Dumps:**

<http://www.braindump2go.com/70-336.html> (110 Q&As) Braindump2go New Released Microsoft 70-336 Practice Tests Sample Questions Free Download! 100% Same Questions with Actual 70-336 Exam! Guaranteed 100% Pass! Exam Code: 70-336Exam Name: Core Solutions of Microsoft Lync Server 2013 Certification Provider: Microsoft Corresponding Certifications: MCSE, MCSE: Communication [70-336 Dump](#), [70-336 PDF](#), [70-336 VCE](#), [70-336 Study Guide](#), [70-336 Book](#), [70-336 Exam Questions](#), [70-336 eBook](#), [70-336 Exam Guide](#), [70-336 Exam Prep](#), [70-336 Braindump](#), [70-336 Practice Test](#), [70-336 Practice Exam](#)

**Microsoft Core Solutions of M**



**Product Description**

**Exam Number/Code:**

Microsoft Core Solutions of Microsoft Certification has assembled to take exam resources, you need for your successful M

**Questions and Answers : 110 Q&As**

Updated: Dec 12, 2015

~~\$420.00~~ **\$99.99**

[PDF DEMO](#)

[CHECK OUT](#)

[Printable PDF](#)

**Free Demo Download**

Braindump2go offers Microsoft Core Solutions of Microsoft Certification (Server 2013). You can take exams before you de

**QUESTION 41** Hotspot Question Your company has two main offices. The main offices are located in Tokyo and Athens. The network contains an Active Directory forest named contoso.com. The offices connect to each other by using a WAN link. Each office connects directly to the Internet. You plan to deploy a Lync Server 2013 infrastructure that has federation enabled. You need to recommend a Lync Server 2013 topology for the planned deployment. The solution must ensure that each office uses its local Internet connection for federated communications with the company's external partners. What is the minimum number of Edge Servers, Federation routes, SIP domains, and Sites that you should recommend? To answer, select the appropriate number of Edge Servers, Federation routes, SIP domains, and Sites in the answer area.

**Answer Area**

Edge Servers:

Federation routes:

SIP Domains:

Sites:

0  
1  
2  
3  
4

0  
1  
2  
3  
4

0  
1  
2  
3  
4

0  
1  
2  
3  
4

Braindump2go.com

Answer:

**Answer Area**

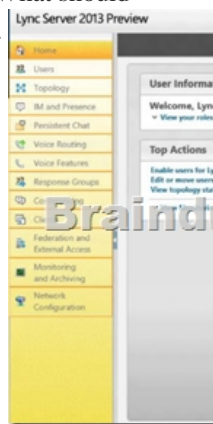
Edge Servers:

Federation routes:

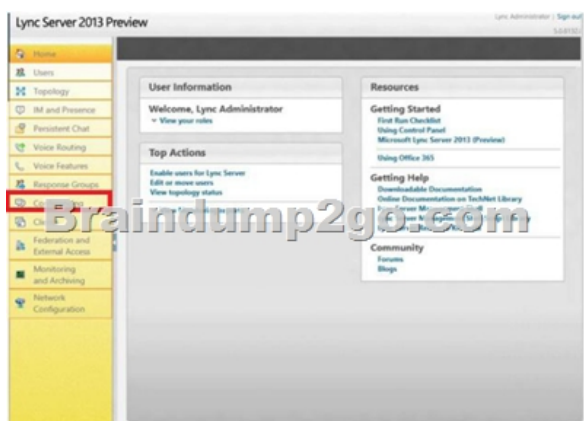
SIP Domains:

Sites:

QUESTION 42 Hotspot Question You have a Lync Server 2013 infrastructure that is used for conferencing and Enterprise Voice. Only users who are enabled for Enterprise Voice can use the callback feature. Other users report that they cannot use the callback feature. You need to ensure that all of the users who are NOT enabled for Enterprise Voice can use the callback feature. What should you use from the Microsoft Lync Server 2013 Control Panel? To answer, select the appropriate object in the answer area.



Answer:



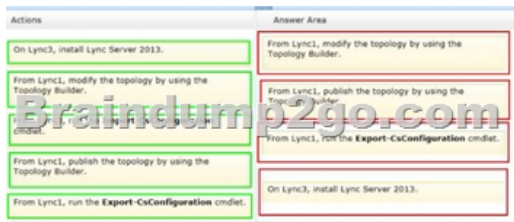
QUESTION 43 Drag and Drop Question You have a Lync Server 2013 infrastructure that contains two servers. The servers are configured as shown in the following table.

Server name	Role
Lync2.contoso.com	Mediation Server

You deploy a new server named lync3.contoso.com. You plan to install the Edge Server role on Lync3. You need to identify which tasks must be performed to install the Edge Server role on Lync3. Which four actions should you identify? To answer, move the four appropriate actions from the list of actions to the answer area and arrange them in the correct order.



Answer:



QUESTION 44 You have a Lync Server 2013 infrastructure that contains seven servers. The servers are configured as shown in the following table. You configure pool pairing and SQL Server database mirroring. SQL1 fails. You discover that an automatic failover fails to occur. You need to force a failover of the database. Which command should you run?

Server name	Pool name	Role
Server1	Pool01.contoso.com	Front End Server
Server2	Pool01.contoso.com	Front End Server
Server3	Pool02.contoso.com	Front End Server
Server4	Pool02.contoso.com	Front End Server
SQL1	Pool01.contoso.com	Microsoft SQL Server
SQL2	Pool01.contoso.com	Microsoft SQL Server
SQL3	Pool02.contoso.com	Microsoft SQL Server

A. `invoke-csdatabasefailover -poolfqdn pool01.contoso.com -databasetype user -newprincipal primary`

B. `Invoke-csdatabasefailover -poolfqdn pool02.contoso.com -databasetype user -newprincipal mirror`  
 C. `Invoke-csdatabasefailover -poolfqdn pool02.contoso.com -databasetype user -newprincipal primary`  
 D. `Invoke-csdatabasefailover -poolfqdn pool01.contoso.com -databasetype user -newprincipal mirror`

Answer: D Explanation: <http://technet.microsoft.com/en-us/library/jj204744.aspx> Case Study: 1 - Contoso Ltd (QUESTION 45 - QUESTION 54) Overview

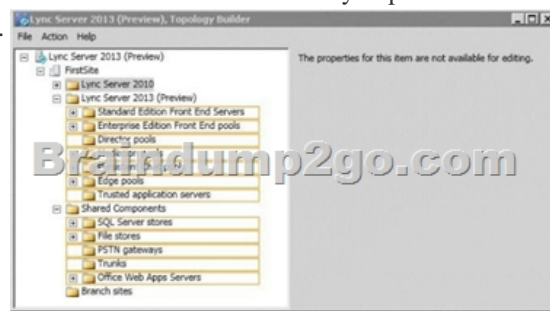
General Overview Contoso, Ltd. is an electronics parts company located in North America. The company has 4,400 employees. Contoso recently bought a company named Litware, Inc. Litware has an office in New York. Litware has a Lync Server 2010 infrastructure and has Microsoft Lync 2010 clients deployed to all of its client computers. Physical Locations Contoso has a main office and a satellite office. The main office is located in Toronto. The satellite office is located in Boston. The Toronto office has 4,200 users. The Boston office has 200 users. All offices connect to each other by using a WAN link. Only the Toronto office connects directly to the Internet. Existing Environment Active Directory Environment Contoso has an Active Directory forest named contoso.com. The forest contains a single domain. All domain controllers run Windows Server 2008 R2. Lync Server Environment Contoso has a Lync Server 2013 infrastructure and a Microsoft Exchange Server 2013 organization. The Lync Server 2013 infrastructure contains an Enterprise Edition Front End pool named Pool1. The network contains five servers. The servers are configured as shown in the following table.

Server name	Role	Location
Lync1	Front End Server in Pool1	Toronto
Server1	Edge Server, Mediation Server, Client Access server	Toronto
Server2	Member server	Toronto
SQL1	Back End Server	Toronto

The Lync Server infrastructure currently uses the names shown in the following table.

Name	Use
pool1.contoso.com	Enterprise Edition Front End pool
Meet.contoso.com	Simple URL for meetings
Webext.contoso.com	External web services FQDN

All users can remotely access the Lync Server services from a client computer. The users cannot access the Lync Server services from a mobile device. Some of the users have Lync 2010 installed. Most of the users run Lync 2013. Problems Statements Contoso identifies the following business issues:- Users in the Boston office report that there are delays in the audio stream during conferences and that the audio frequently drops. Users in the other offices do not report this issue.- Users cannot share Microsoft PowerPoint presentations during web conferences. Users can share other documents.- All of the users in the Toronto office report that they receive the following error message from Lync 2013: "Lync can't connect to Exchange. You might experience Contact list issues". Requirements Planned Changes Contoso plans to implement the following changes:- Implement the unified contact store.- Deploy the Office Web Apps component.- Add a second Front End Server named Lync2 in the Toronto office. - Access Lync Server services by using mobile devices from the internal network and from the Internet.- Implement direct federation with Litware and other business partners. All federated domains will have to be defined explicitly. Administrative Requirements A support technician named Tech1 must be able to perform all of the tasks currently performed by the members of the CSHelpDesk group. Additionally, Tech1 must also be able to edit conferencing policies. Web Conferencing Requirements Contoso identifies the following requirements for web conferencing:- Users from Litware must be able to download the content of web conferences. - Users must be able to share PowerPoint presentations during web conferences. - Users from Litware must be able to record web conferences. - A URL that points to a disclaimer must be provided. Mobility Requirements Contoso plans to provide all users the ability to connect by using mobile devices. When users connect from a mobile device, they must download their server settings automatically. QUESTION 45 Hotspot Question You need to modify the FQDN of the external web services. From which node should you perform the modification? To answer, select the appropriate node in the answer area.



Answer:



QUESTION 46 Which two tasks should be performed to meet the administrative requirements for Tech1? (Each correct answer presents part of the solution. Choose two.) A. Modify the permissions of the RTCUniversalServerAdmins group. B. Run the New-CsAdminRole cmdlet. C. Run the Update-CsAdminRole cmdlet. D. Create a new universal security group and add Tech1 to the group. E. Create a new global security group and add Tech1 to the group. Answer: BDE Explanation: "To create a new role, you must first create a universal security group in Active Directory Domain Services that shares a name with the role;"

<http://technet.microsoft.com/en-us/library/gg398271.aspx> QUESTION 47 You are evaluating the implementation of a reverse proxy for Contoso. You plan to create a certificate for the reverse proxy. You need to identify which names must be included in the certificate. Which three names should you identify? (Each correct answer presents part of the solution. Choose three.) A. lyncdiscover.contoso.com B. lyncdiscoverinternal.contoso.com C. meet.contoso.com D. pool1.contoso.com E.

edge.contoso.comF. webext.contoso.com Answer: ACF<http://technet.microsoft.com/en-us/library/jj205381.aspx> webext is the Subject Name and the Alternative Name with meet and lyncdiscover also listed as Alternative Names QUESTION 48 You need to recommend a solution to resolve the audio issues for the users in the Boston office. Which three possible recommendations should you include in the solution? (Each correct answer presents a complete solution. Choose three.) A. User services B. Call Admission Control (CAC) C. Quality of Service (QoS) D. A conferencing policy E. A location policy Answer: BCE QUESTION 49 You are evaluating the implementation the second Front End Server. You need to recommend which common name must be used for the certificate that will be installed on Lync2. Which name should you recommend using? A. \*.contoso.com B. lync2.contoso.com C. lyncdiscover.contoso.com D. pool1.contoso.com Answer: D Explanation: <http://social.technet.microsoft.com/Forums/en-US/ocscertificates/thread/bc2b0383-17cd-4707-8c2f-19db8dd340f0> The common name or SN of any Front End Server Certificate is the Pool Name. QUESTION 50 You are planning the implementation of the unified contact store. You need to identify which clients can be used to read the contact list and which clients can be used to modify the contact lists. Which clients should you identify? To answer, select the correct actions for each client in the answer area.


Client
Microsoft Outlook 2013
Lync 2010
Lync 2013

Answer:

Client	Read contact lists	Modify contact lists
Microsoft Outlook 2013	<input type="checkbox"/>	<input type="checkbox"/>
Lync 2010	<input type="checkbox"/>	<input type="checkbox"/>
Lync 2013	<input type="checkbox"/>	<input type="checkbox"/>

Braindump2go Offers PDF & VCE Dumps Download for New Released Microsoft 70-336 Exam! 100% Exam Success Guaranteed OR Full Money Back Instantly!

**Microsoft Core Solutions of Microsoft Lync Server 2013: 70-336**



**Product Description Exam Number/Code: 70-336**

**Exam Number/Code: 70-336**

"Microsoft Core Solutions of Microsoft Lync Server 2013", also known as 70-336 exam, is a Microsoft Certification. With the complete collection of questions and answers, Braindump2go has assembled to take you through 110 Q&As to your 70-336 Exam preparation. In the 70-336 exam resources, you will cover every field and category in Microsoft MCITP helping to ready you for your successful Microsoft Certification.

**Free Demo Download**

Braindump2go offers free demo for 70-336 exam (Microsoft Core Solutions of Microsoft Lync Server 2013). You can check out the interface, question quality and usability of our practice exams before you decide to buy it.

Questions and Answers : 110 Q&As  
 Updated: Dec 12, 2015  
~~\$429.99~~ **\$99.99**

[PDF DEMO](#)

[CHECK OUT](#)

Printable PDF  Premium VCE + VCE Simulator

**FREE DOWNLOAD: NEW UPDATED 70-336 PDF Dumps & 70-336 VCE Dumps from Braindump2go:**  
<http://www.braindump2go.com/70-336.html> (110 Q&As)